

Pressure Gauge MAN-63

Application

- Hygienic pressure measurement

Application examples

- Locale display without power supply

Hygienic design / Process connection

- By using the Negele weld-in sleeve **EMZ-352**, a hygienic and easy cleanable measurement point will be achieved
- Adapter for DIN 11851, Varivent, SMS, RJT etc.
- Direct connection for 3/4" und 1" TriClamp
- CIP- / SIP-cleanable up to 140 °C / max. 60 min
- Gauges completely made of stainless steel
- Sensor materials and actuating fill are FDA conform
- IP66, housing for optimized cleanability

Features

- Complete device is certified by 3-A-SSI
- With **CLEANadapt** an easy adaption to all process connection is possible
- Zero adjustable
- Surface Ra < 0,2 µm is standard

Options

- Case filing with glycerin for damping
- Actuating fill with neobee M20

Authorisations



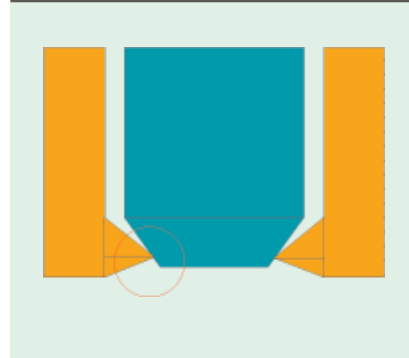
MAN-63 / S



MAN-63 / TC1/4"



Hygienic elastomer free sealing principle

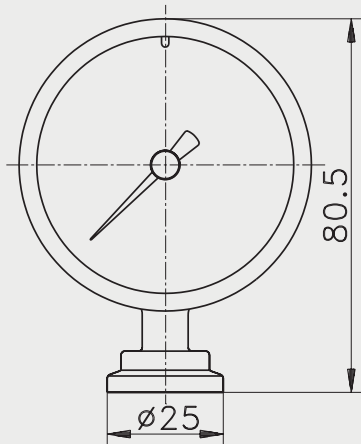


Specification		
Material	diaphragm fitting bourbon tube movement case inspection window case fill	1.4404 1.4404 1.4301 1.4301 1.4301 polycarbonat glyzerin
Actuating fill	(all FDA conform) option	paraffin oil neobee M20
Protection class		IP66
Over-range capability		minimum 25 % over range
Accuracy	repeatability linearity hysteresis	± 0,5 % of full scale ± 0,5 % of full scale ± 0,5 % of full scale
Temperature	process CIP / SIP ambient	-5 °C...120 °C 140 °C / maximum 60 minutes -10 °C...50 °C slower reaction at deep temperatures
Stability	from 10...90 % of range	< ± 0.01 % / K of full scale in process or ambient temperature

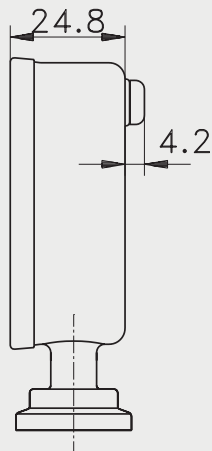
Overview of deliverable process connections (basic device and adapters must be ordered separately!)
The complete overview of all available adapters you will find at product information **CLEANadapt** in chapter 1.

MAN-63 / S					
					
Process Connection	Build-in system EHG (DIN 11850 series 2)	Negele weld-in sleeve	TriClamp	Diary flange (DIN 11851)	DRD (press ring optional deliverable)
DN25	-	EMZ-352 suitable for installation in vessels	AMC-352/1"-1,5"	AMK-352/25	-
DN40	EHG-40/1"		AMC-352/1"-1,5"	AMK-352/40	-
DN50	EHG-50/1"		AMC-352/2"	AMK-352/50	AMK-352
DN65	EHG-65/1"	EMS-352 suitable for installation in pipes	AMC-352/3"	AMK-352/65	AMK-352
DN80	EHG-80/1"		AMC-352/80	AMK-352/80	AMK-352
DN100	EHG-100/1"		AMC-352/4"	AMK-352/100	AMK-352

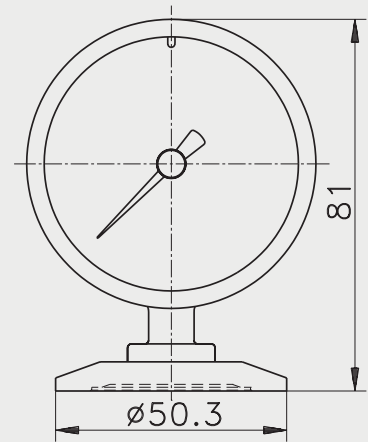
MAN-63 / TC3/4" DIRECTadapt



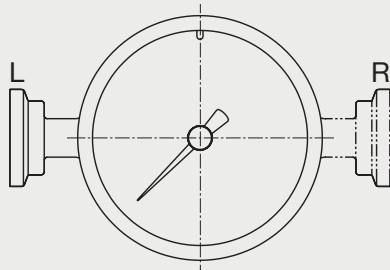
MAN-63 / TC3/4" DIRECTadapt



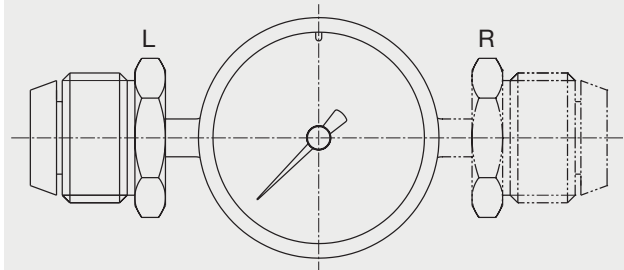
MAN-63 / TC1"



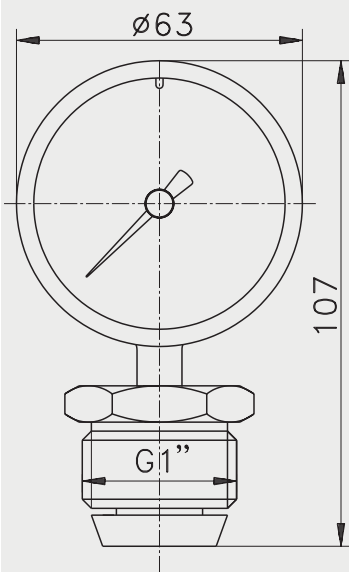
MAN-63 / TC3/4" connection L (left) / R (right)



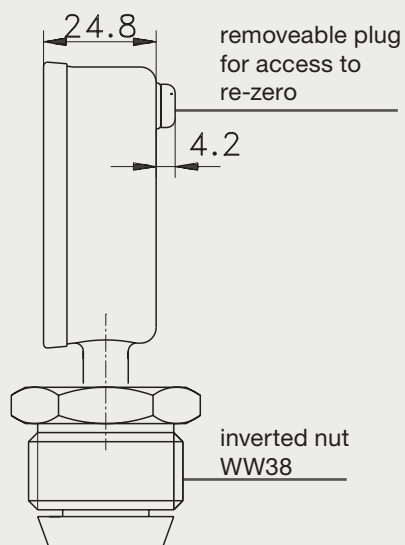
MAN-63 / S connection L (left) / R (right)



MAN-63 / S



MAN-63 / S



Order Code

MAN-63 (diameter housing 63 mm)
MAN-63A (like MAN-63, but with 3-A TPV according to standard 74-03 at process connection TC)

Process Connection

TC3/4" (TriClamp 3/4")

TC1" (TriClamp 1")

Following Process Connection only for MAN-63 (not with 3-A TPV Verification)

S (CLEANadapt 1")

Measuring Range

-1...+2 (-1,0...+2,0 bar)

-1...+4 (-1,0...+4,0 bar)

0...2 (0...2,0 bar)

0...4 (0...4,0 bar)

0...6 (0...6,0 bar)

0...7 (0...7,0 bar)

0...11 (0...11,0 bar)

Filling

X (paraffin oil)

GC (Neobee M20)

Calibration Possibility

X (without)

N (zero)

Damping

X (without)

GZ (glycerine filling)

M (hydro-mechanical damping)

Connection

U (down)

L (left)

R (right)

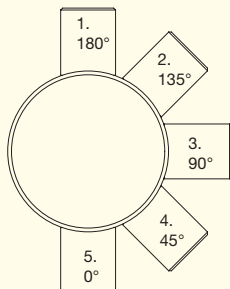
MAN-63 / TC1" / 0...2 / X / X / X / U

Conditions for a measuring point according to 3-A-Standard 74-03



· The sensors MAN-63A / TC... are approved according to the 3-A-Standard.

· Self draining has to be warranted by the build-in position (pos. 1, 2 or 3).



· The process connection needs a self-draining leakage hole.